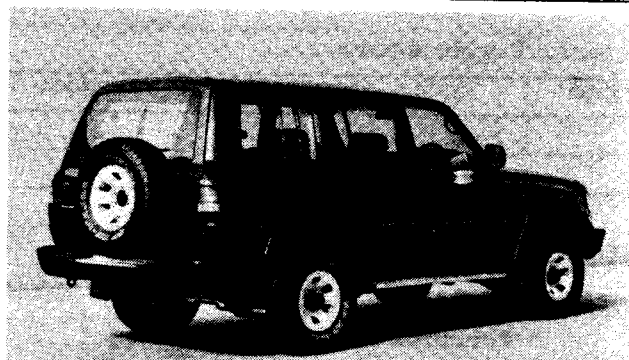


Department of Transport and Communications
Federal Office of Road Safety
NEW VEHICLE DATA - (NVD1)

Revision No. ORIG	Make-sheet No. TOYOTA 72
CPA No.	8398 ISSUE 4
Body Type	WAGON
Date	01-AUG-91
Axle Code B	NSW Body Code 371

Make TOYOTA	Vehicle Category Code MC
Model LANDCRUISER 80 SER	
Marketing Designation LANDCRUISER	



Variant Information	1	2	3	4
Variant	FZJ80R-GCMRKQ (1992 ON)	FZJ80R-GNMNKQ (1992 ON)	FZJ80R-GNPNKQ (1992 ON)	FZJ80R-GNPEKQ (1992 ON)
Tare mass of variant	1940	1960	2010	2080
Gross vehicle mass	2960	2960	2960	2960
Gross Combination mass	5460/3710 %	5460/3710 %	5460/3710 %	5460/3710 %
Aggregate Weight (NSW)	3260	3260	3260	3260

Standard Equipment and Major Options
Engines

	Capacity	Cyls/ Conf.	Mtv. pwr.	Net pwr. (kw/l/min)	F.i or No of Carbs	RAC rating	Nat. or F	Mass variation (add to or subtract from tare)			
								1	2	3	4
a.	4477	IL6	P	158/4600	MPI	37	N	S	S	S	S
b.											
c.											
d.											

Other

	Description	Mass variation (add to or subtract from tare)			
1	5 SPEED MANUAL TRANSMISSION	S	S	N	N
2	4 SPEED AUTOMATIC TRANSMISSION	N	N	S	S
3	AIR CONDITIONING SINGLE/DUAL	+26/N	+26/+43	+26/+43	+27/+44
4	MUDGUARD OVERFENDER/SIDE STEP	N/+9	+9/+9	+9/+9	+9/+9
5	POWER WINDOWS & CENTRAL LOCKING	N	+5	+5	S
6	REAR DISC BRAKES	-2	S	S	S
7	ANTI-LOCK BRAKES (ABS)	N	+23	+23	+23
8	275/70R16 TYRES. 8JJ STEEL/ALLOY RIMS	N/N	-7/-45	-7/-45	-7/-45
9	SEPERATE FRONT SEATS/SPORT SEATS	N/N	-2/N	S/N	S/+3
10	THIRD ROW OF SEATS/MOON ROOF	N/N	+35/+29	+35/+29	S/+29
11	EXTRA FUEL TANK	+20	+20	+20	+20

NVD-1

(All measurements in kg, ml or mm)

