

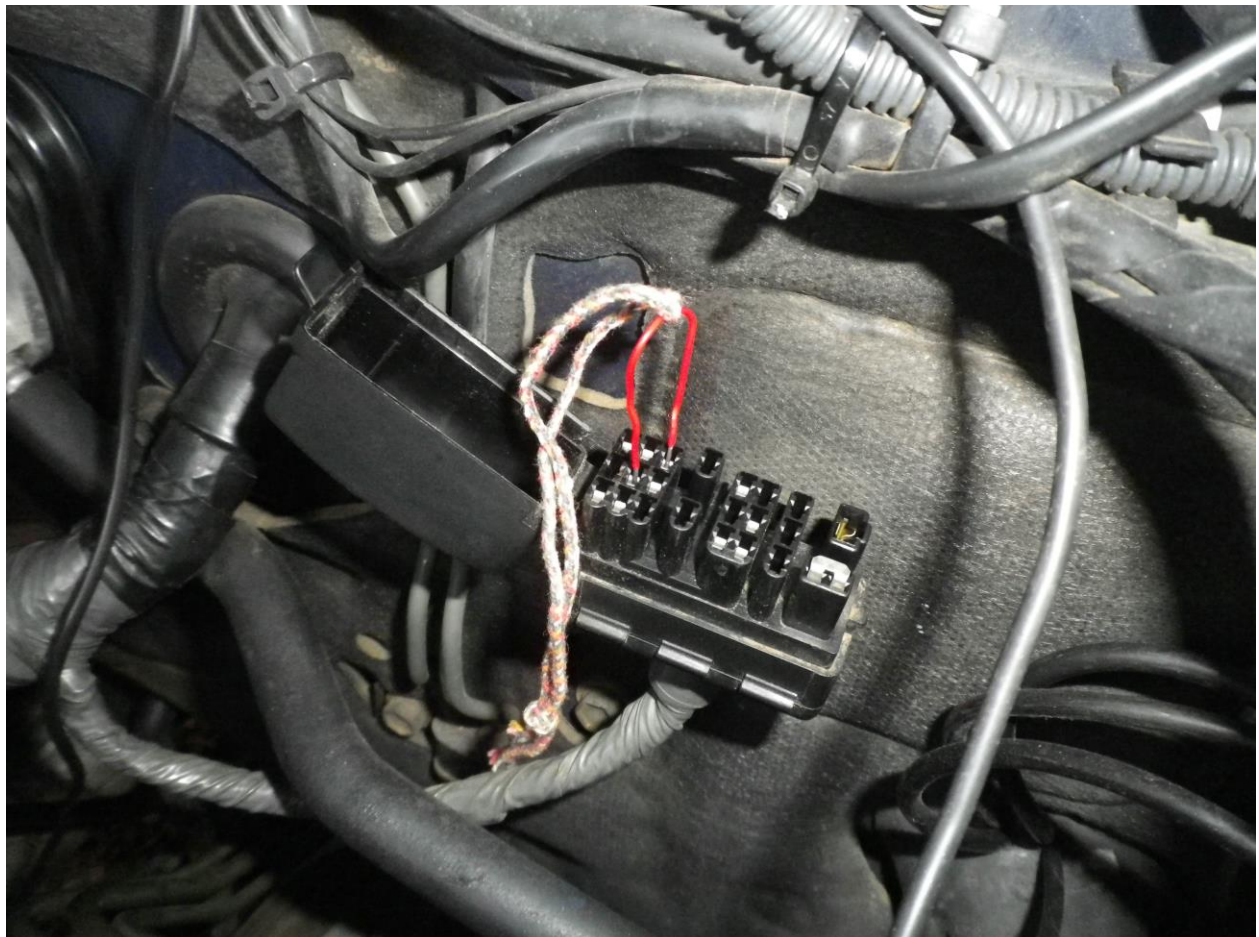
# Timing Basics - Land Cruiser 80 series 1FZ-FE

Timing light and magic jumper tool

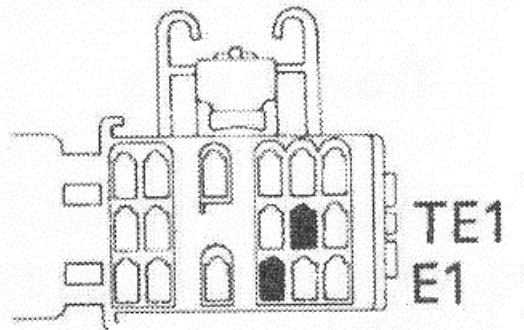


Put vehicle into service mode (engine off)

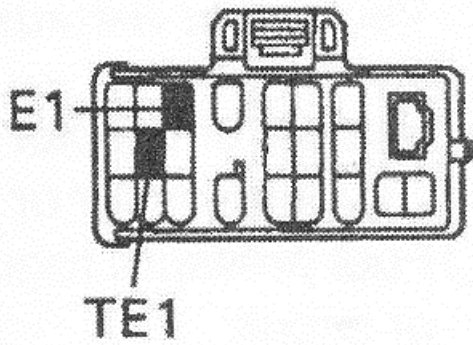
Diagnostic port on the passenger firewall and jumper in place



# Terminals to be bridged



1988-1992

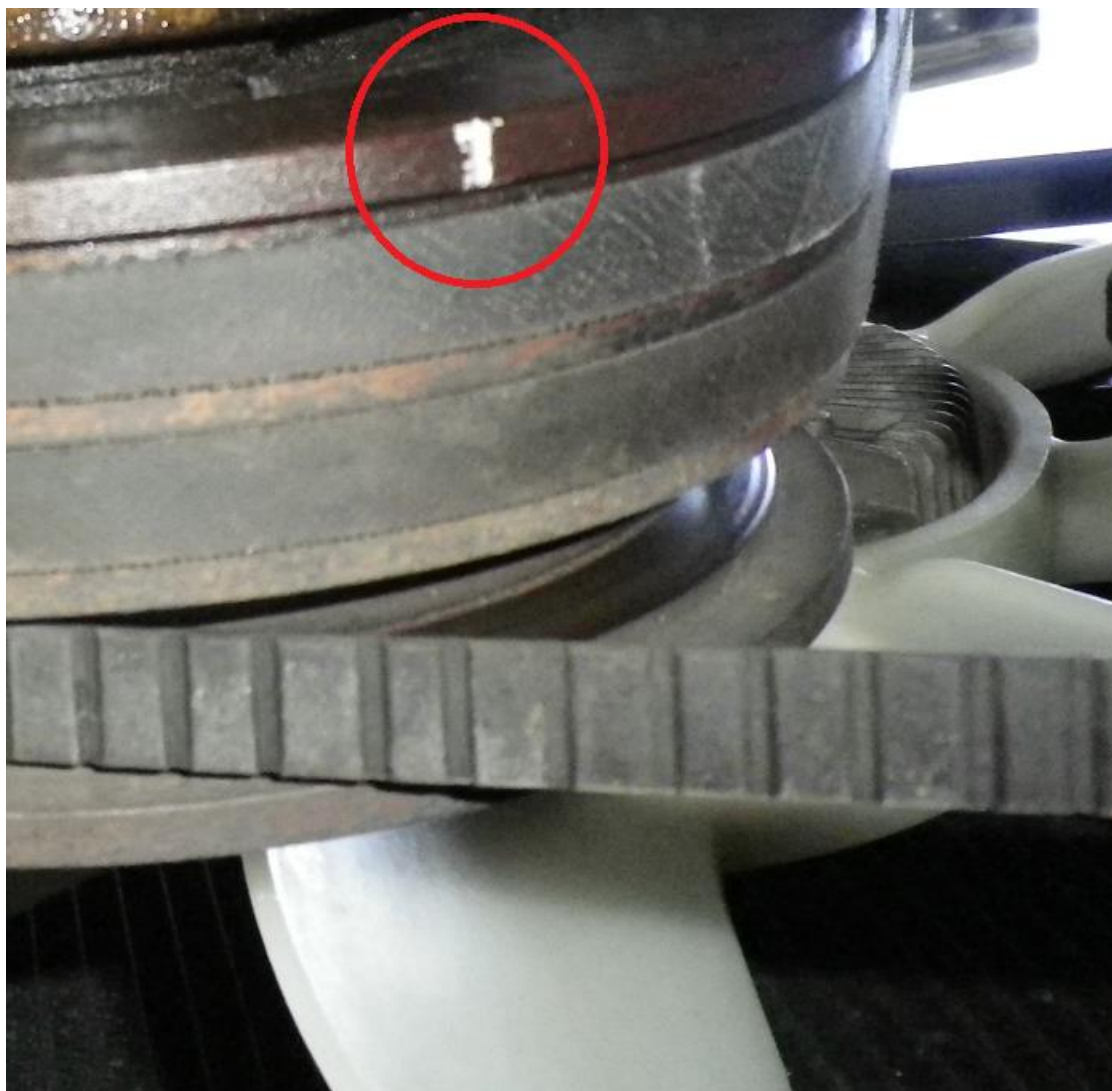


1993- on

Vehicle in neutral (+ wheel chocks!)

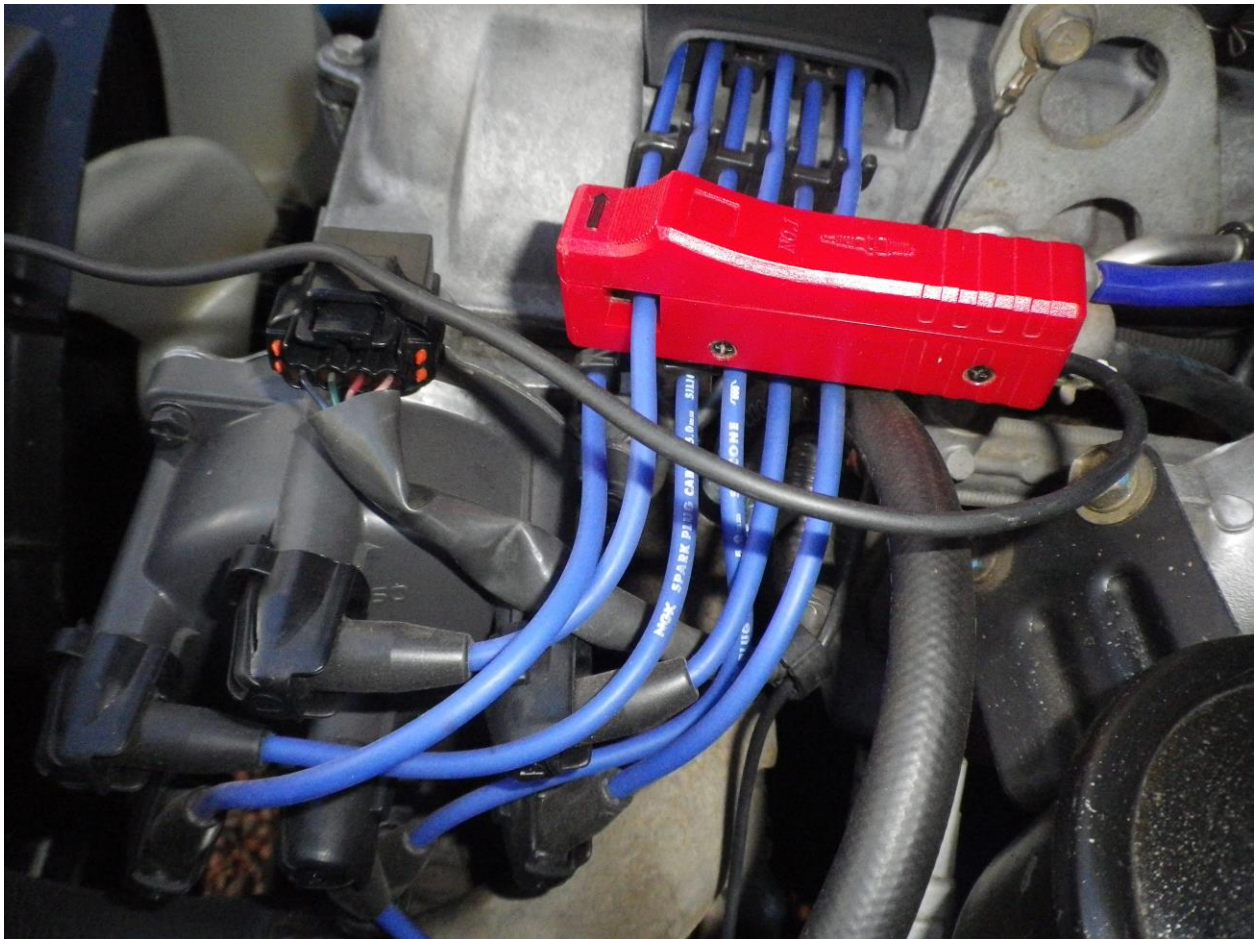


Paint the timing marker on the crank pulley white to make it much easier to see during the timing check process



HT pickup on #1 lead

Distributor cap is marked 1-6





# External battery source





Engine idling and warm .... aim and trigger

Keep everything back and away from moving parts!



Light will show white timing mark flashing in the numbered (0° to 15°) area below

3° is the factory setting



Timing is advanced/retarded by loosening this bolt slightly and moving the distributor(motor off) .. Mark its original placement so you can go back to where it was if necessary

This motor is set to 12° so moving the distributor anti clockwise will retard the timing

